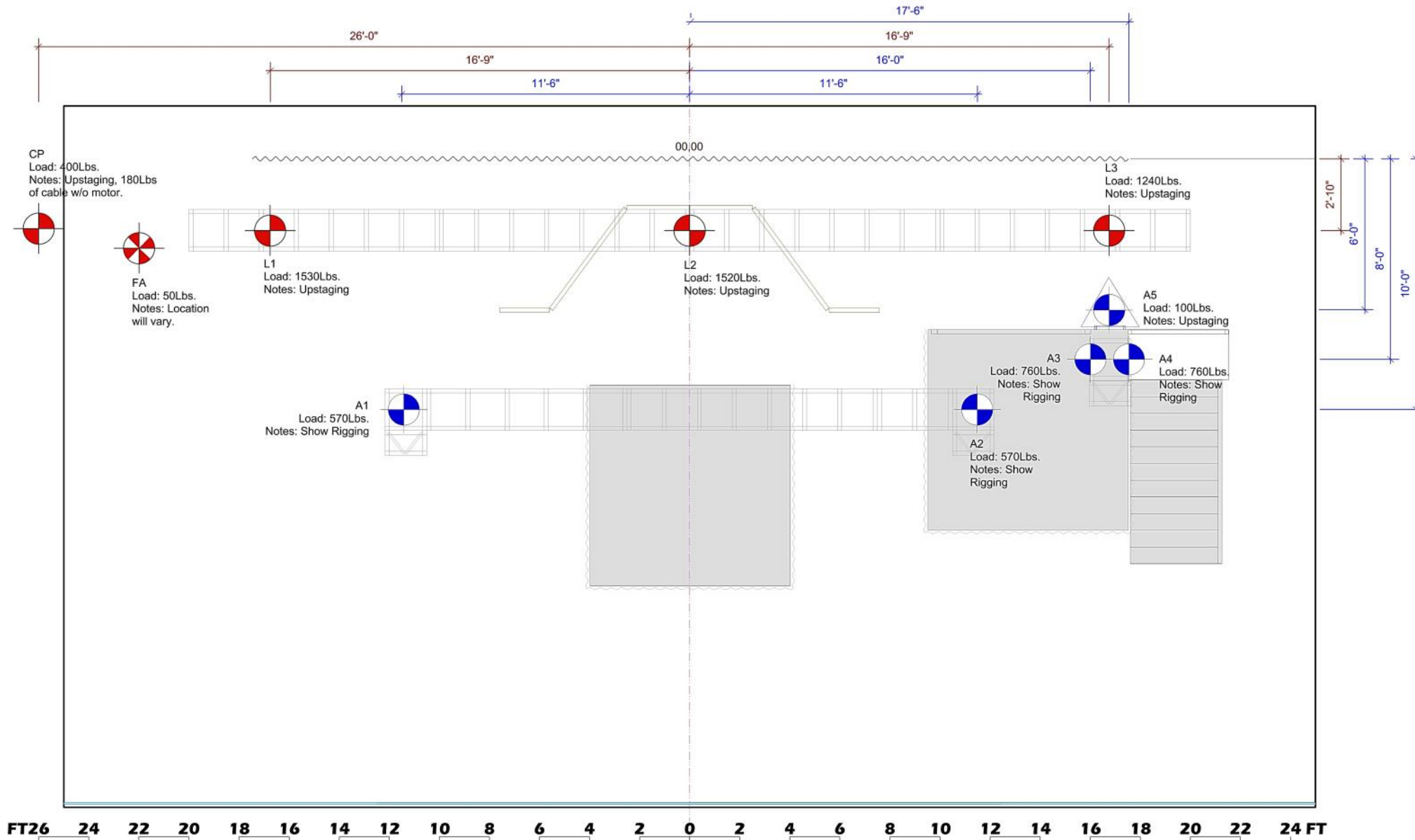






Rigging Plot



RIGGING KEY

-  1/4 Ton Motor Inverted
-  1/2 Ton Motor
-  1 Ton Motor
-  Vertical Fall Arrester

NOTES

- * Total maximum show load (dynamic) = 8,000Lbs.
- * All noted load estimates are dynamic (+20%).
- * Vertical fall arrest and cable pick locations will vary by venue.
- * Anticipated production depth is 28'.
- * Maximum desired trim height is 24' from stage floor.
- *

For Production information Contact:

~Production Manager~